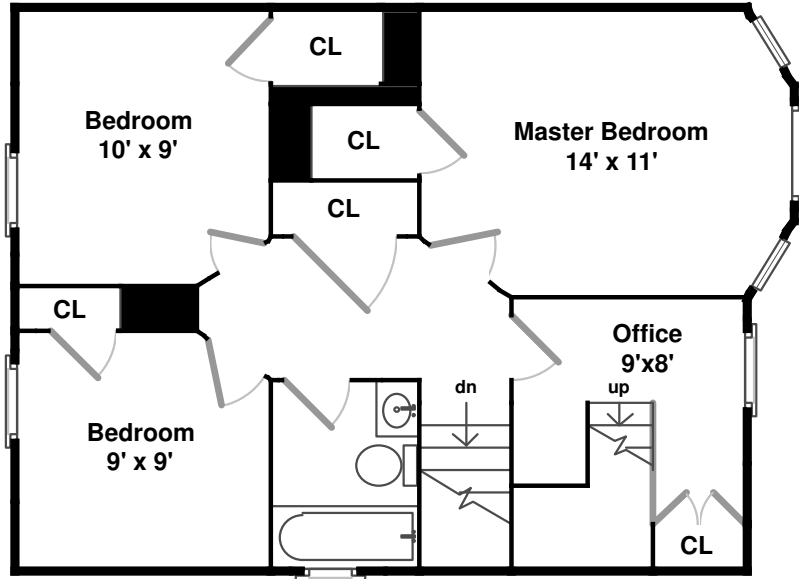


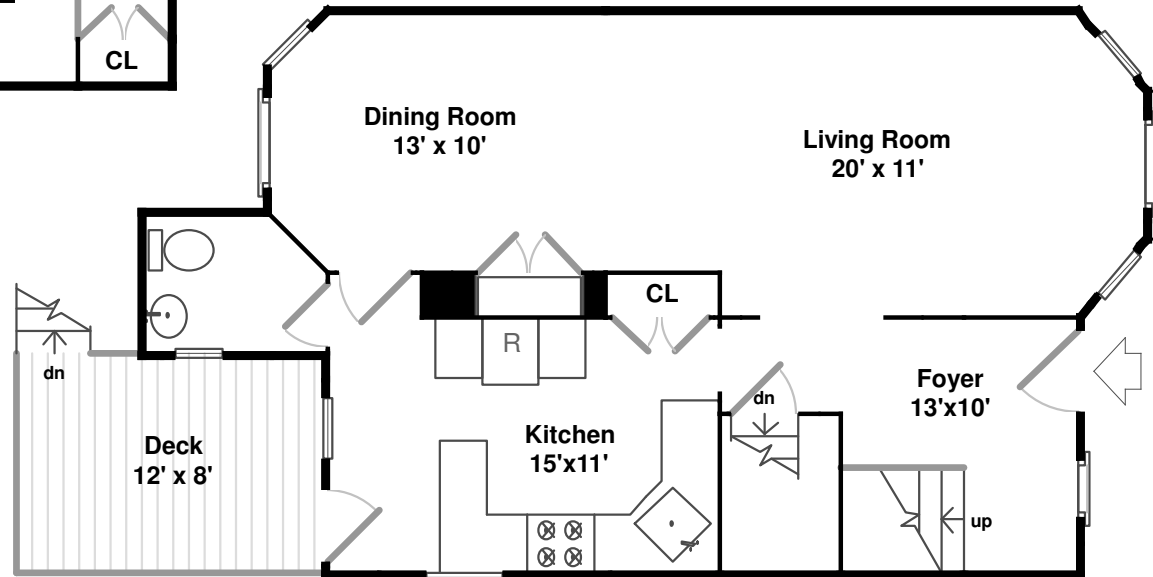
Upper



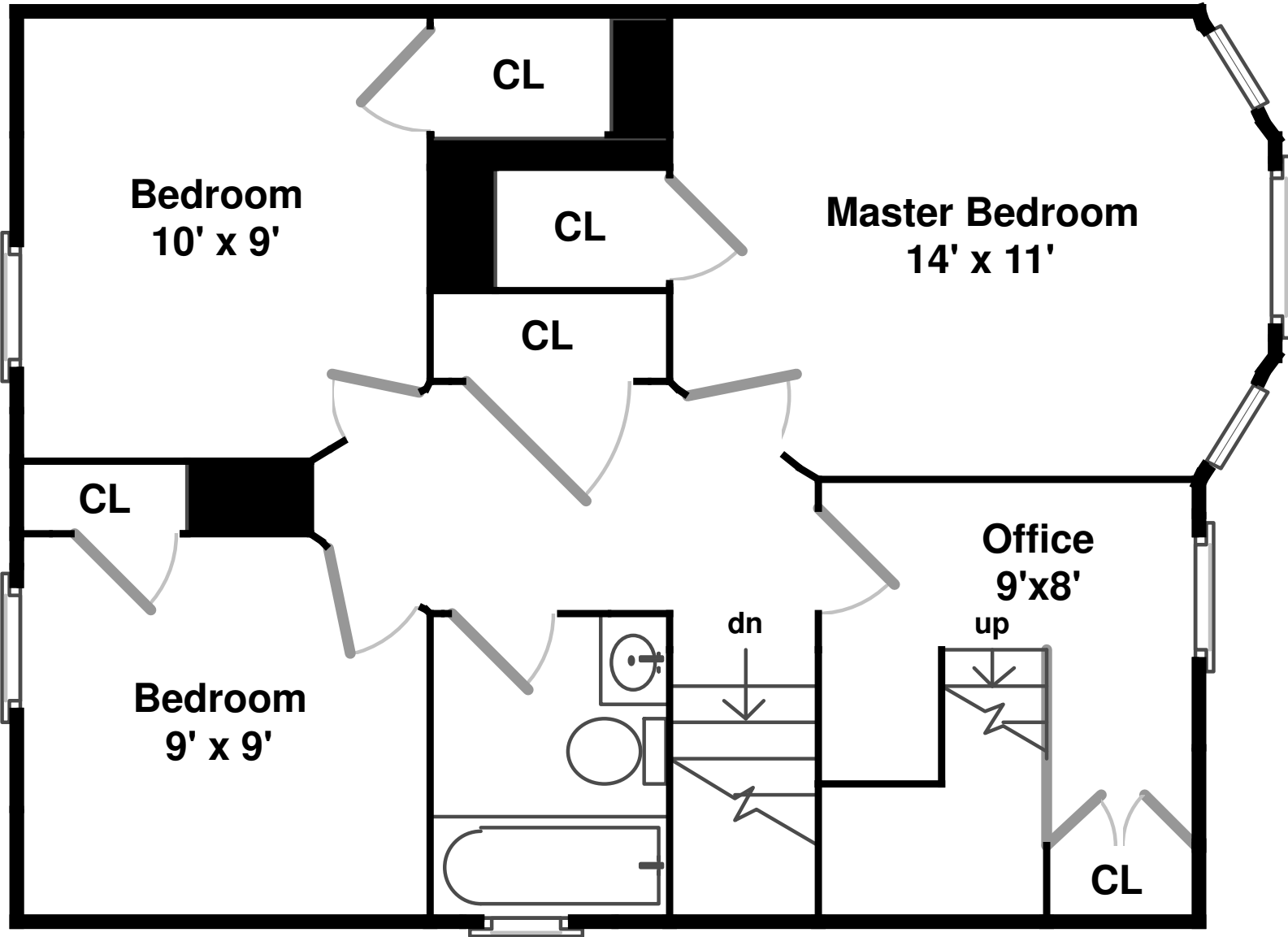
1664 W Bryn Mawr Ave

Floor plan by **Vis-Home** 2011
Measurements may not be 100% accurate
Floor plans are provided for convenience only
Rooms sizes are not used to calculate area

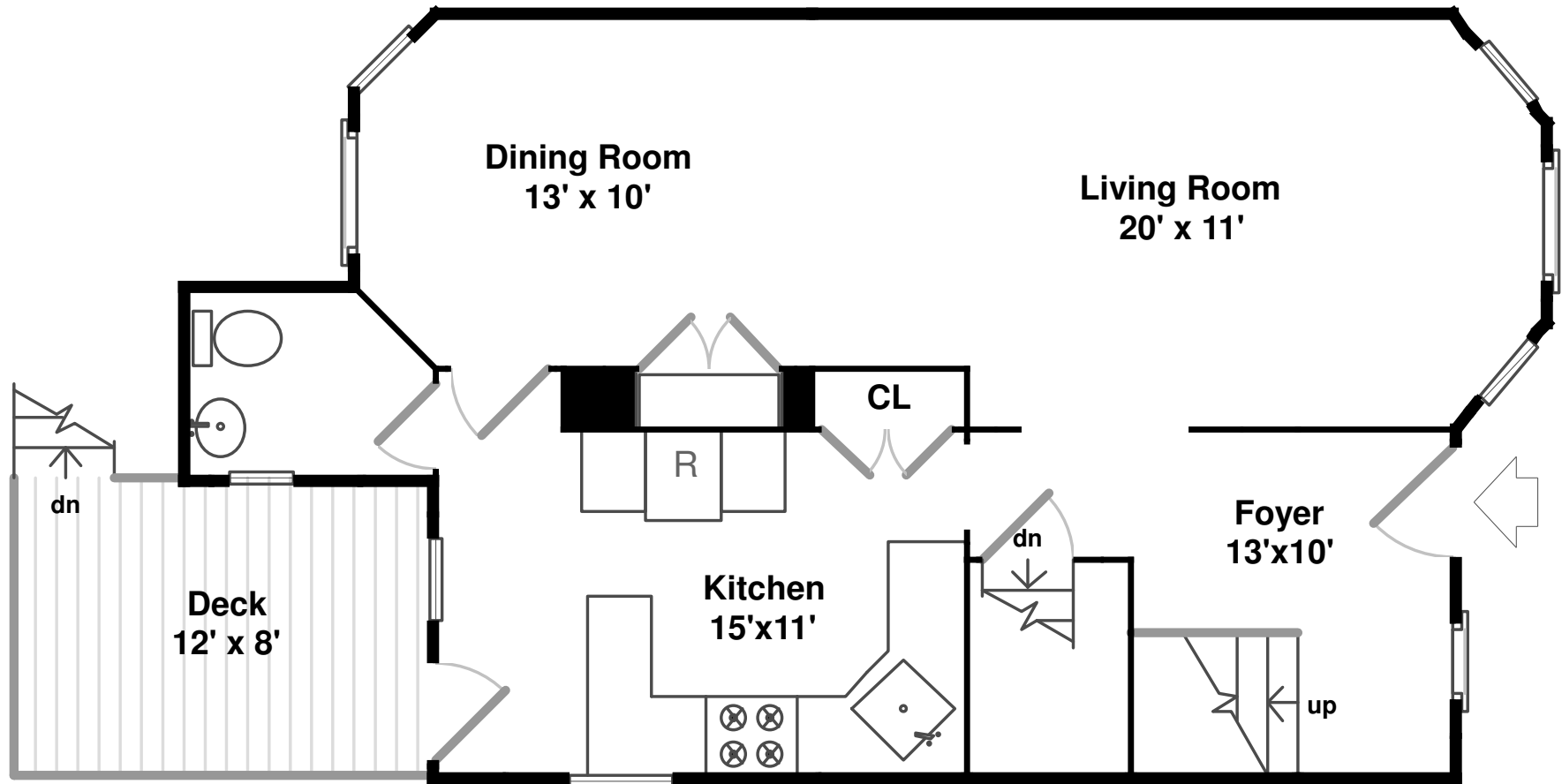
Main



Upper



Main





Outside



Outside



Backyard



Foyer



Living Room



Living Room



Dining Room



Dining Room



Kitchen



Powder



Deck



Bedroom



Bedroom



Office



Bathroom



Master Bedroom